

industrial



wood

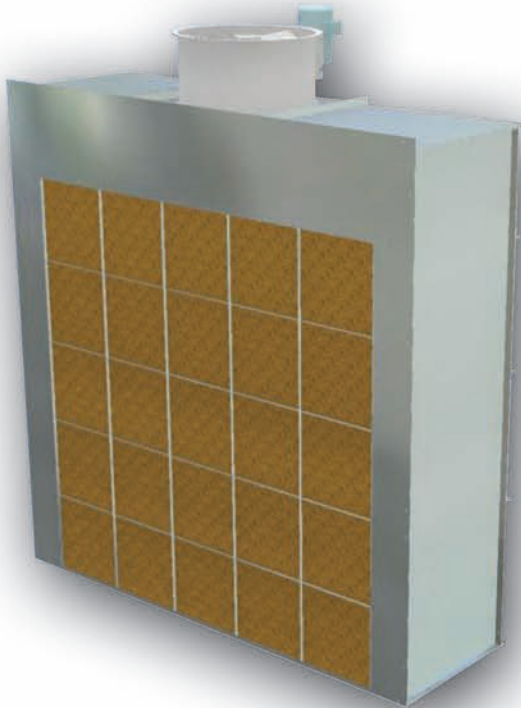


automotive



truck

EZ EXHAUST CHAMBERS



- HEAVY DUTY CONSTRUCTION
- MODULAR DESIGN ALLOWS FOR CONVERSION TO PAINT BOOTH
- EASY TO INSTALL

These floor model chambers are designed for exhausting dust, harmful vapors and paint fumes. The dry arrestor filters trap the airborne overspray particles before the filtered air is discharged through the exhaust system and into the atmosphere.

The chambers are available in a wide range of designs to meet practically any production requirement. Air replacement units and intake chambers can be added as well as reduced airflows for automatic spray operations.

CONSTRUCTION FEATURES AND QUALITY STANDARDS

Chambers are constructed from 18-gauge, prime quality, galvanized steel. Structural steel is used to add strength and rigidity to chambers as necessary. Control panel is optional, fire control systems are to be supplied by others.

EXHAUST SYSTEM FEATURES

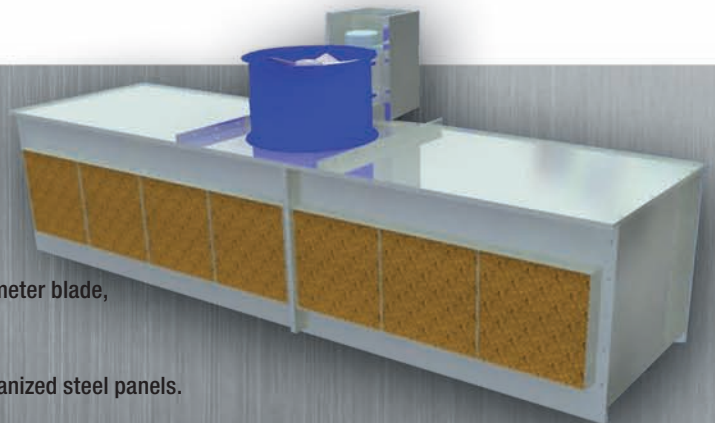
A tubeaxial exhaust fan, designed specifically for use in paint spray exhaust chambers, powers the airflow through the booth and exhaust stack. All exhaust fans are of non-sparking construction. The motor drive and bearings are sealed from the air stream of the exhaust. Open drip proof (ODP) motors are provided with each unit. Explosion-proof motor upgrade is required for flammable painting environments.



EZ EXHAUST BENCH

This exhaust bench provides a very practical method for removing hazardous and contaminated air generated by refinish, repair and other shop-related operations.

- Exhaust fan with capacity of 8,000 CFM. Furnished with 24" diameter blade, 2HP, 208/230/460V three-phase open drip proof (ODP) motor.
- Compact design saves valuable floor space.
- Heavy-duty construction bench is fabricated with 18-gauge galvanized steel panels.
- Promotes shop safety by exhausting harmful vapors and dust thereby reducing health hazards for shop personnel.
- Explosion-proof motor upgrade is required for flammable painting environments.



COL-MET SPRAY BOOTHS COMPLY WITH ALL APPLICABLE OSHA AND NFPA REGULATIONS.

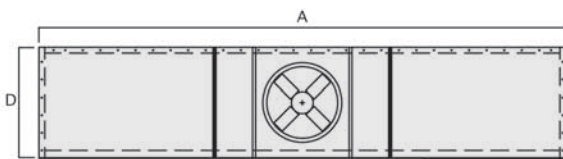
EZ EXHAUST CHAMBERS

EZ CHAMBER

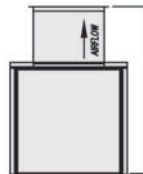
Model Number	Exterior Dimensions			Qty. Filters	Fan Diameter	Fan HP	SCFM @ 1/2" SP
	Width	Height	Length				
IBC-0407	4'-4"	7'-2"	2'-2"	8	18"	3/4HP	3,500
IBC-0607	6'-4"	7'-2"	2'-8"	12	24"	1HP	5,250
IBC-0807	8'-4"	7'-2"	2'-8"	16	24"	1 1/2HP	7,000
IBC-1007	10'-0"	7'-2"	3'-8"	20	30"	1 1/2HP	8,750
IBC-1207	12'-0"	7'-2"	3'-8"	24	30"	2HP	10,500
IBC-1407	14'-4"	7'-2"	3'-8"	32	30"	3HP	12,500
IBC-1607	16'-4"	7'-2"	3'-8"	36	30"	5HP	14,000
IBC-1807	18'-4"	7'-2"	4'-2"	40	42"	3HP	15,750
IBC-2007	20'-4"	7'-2"	4'-2"	44	42"	3HP	18,000
IBC-0408	4'-4"	8'-2"	2'-2"	8	18"	3/4HP	3,500
IBC-0608	6'-4"	8'-2"	2'-8"	12	24"	1HP	6,000
IBC-0808	8'-4"	8'-2"	2'-8"	16	24"	2HP	8,000
IBC-1008	10'-0"	8'-2"	3'-2"	20	30"	2HP	10,000
IBC-1208	12'-0"	8'-2"	3'-8"	24	30"	3HP	12,500
IBC-1408	14'-4"	8'-2"	3'-8"	32	30"	5HP	14,000
IBC-1608	16'-4"	8'-2"	3'-8"	36	30"	5HP	15,000
IBC-1808	18'-4"	8'-2"	4'-2"	40	42"	3HP	18,000
IBC-2008	20'-4"	8'-2"	4'-2"	44	42"	5HP	20,000
IBC-0410	4'-4"	10'-2"	2'-2"	10	18"	1 1/2HP	5,000
IBC-0610	6'-4"	10'-2"	2'-8"	15	24"	1 1/2HP	7,500
IBC-0810	8'-4"	10'-2"	3'-8"	20	30"	2 HP	10,000
IBC-1010	10'-0"	10'-2"	3'-8"	25	30"	3HP	12,500
IBC-1210	12'-0"	10'-2"	3'-8"	30	30"	5HP	15,000
IBC-1410	14'-4"	10'-2"	4'-2"	40	42"	3HP	17,500
IBC-1610	16'-4"	10'-2"	4'-2"	45	42"	5HP	20,000
IBC-1810	18'-4"	10'-2"	4'-2"	50	42"	5HP	22,500
IBC-2010	20'-4"	10'-2"	4'-2"	55	42"	7 1/2HP	25,000
IBC-0412	4'-4"	12'-2"	2'-8"	12	24"	1HP	6,000
IBC-0612	6'-4"	12'-2"	2'-8"	18	24"	3HP	9,000
IBC-0812	8'-4"	12'-2"	3'-8"	24	30"	3HP	12,000
IBC-1012	10'-0"	12'-2"	3'-8"	30	30"	5HP	15,000
IBC-1212	12'-0"	12'-2"	4'-2"	36	42"	3HP	18,000
IBC-1412	14'-4"	12'-2"	4'-2"	48	42"	5HP	22,500
IBC-1612	16'-4"	12'-2"	4'-2"	54	42"	7 1/2HP	24,000
IBC-1812	18'-4"	12'-2"	4'-2"	60	42"	7 1/2HP	27,000
IBC-2012	20'-4"	12'-2"	4'-2"	66	42"	10HP	30,000

EZ BENCH

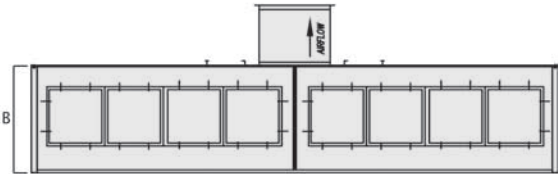
Model Number	Exterior Dimensions				CFM @ 1/2" SP	Fan Spec		Filters Exhaust	Manometer
	Width	Height Less Fan	Height w/ Fan	Length		Dia.	HP		
EB-12	12'-0"	3'-0"	4'-4"	3'-2"	8,000	24"	2	7	YES
EB-15	15'-0"	3'-0"	4'-4"	3'-2"	8,000	24"	2	8	YES
Reference Key	A	B	C	D					



PLAN VIEW



END VIEW



SIDE ELEVATION



Col-Met Spray Booths
 Dallas, TX // e-mail: sales@colmetsb.com
 Toll-free: 888.452.6684 // www.colmetsb.com